

Drain: OVERMAN - HARVEY Drain #: 32
Improvement/Arm: MURPHY DITCH
Operator: J. LIVINGSTON Date: 5-18-04
Drain Classification: Urban/Rural Year Installed: 1989

GIS Drain Input Checklist

- Pull Source Documents for Scanning JL
- Digitize & Attribute Tile Drains _____
- Digitize & Attribute Storm Drains JL
- Digitize & Attribute SSD _____
- Digitize & Attribute Open Ditch JL
- Stamp Plans JL
- Sum drain lengths & Validate JL
- Enter Improvements into Posse JL
- Enter Drain Age into Posse JL
- Sum drain length for Watershed in Posse JL
- Check Database entries for errors JL

Gasb 34 Footages for Historical Cost Drain Length Log

Drain-Improvement: OVERMAN - HARVEY - MURPHY DITCH

| Drain Type: | Size: | Length | Length (DB Query) | Length Reconcile | If Applicable | |
|-------------|---------|--------------|----------------------|---------------------|-----------------------|--------------------------------|
| | | | | | Price: | Cost: |
| RCP | 33" x 2 | 60' | 90' | 130' | 28. ⁵⁰ /lf | 5130. ⁰⁰ |
| OPEN DITCH | — | 1790' | 1790' | | 19. ⁵⁵ /lf | 34,994. ⁵⁰ |
| | | | | | | |
| | | | | | | |
| | | | | | | |
| | | | | | | |
| | | | | | | |
| | | | | | | |
| | | | | | | |
| | | | | | | |
| | | | | | | |
| | | | | | | |
| | | | | | | |
| Sum: | | <u>1850'</u> | <u>1880'</u> | <u>130'</u> | | <u>\$ 40,124.⁵⁰</u> |

Final Report: 1850'

Comments:

ALL AVAILABLE AERIAL PHOTOGRAPHY SHOWS 90' OF 33" RCP UNDER 146TH ST. THE ADDITION WAS MADE PRIOR TO 1994.

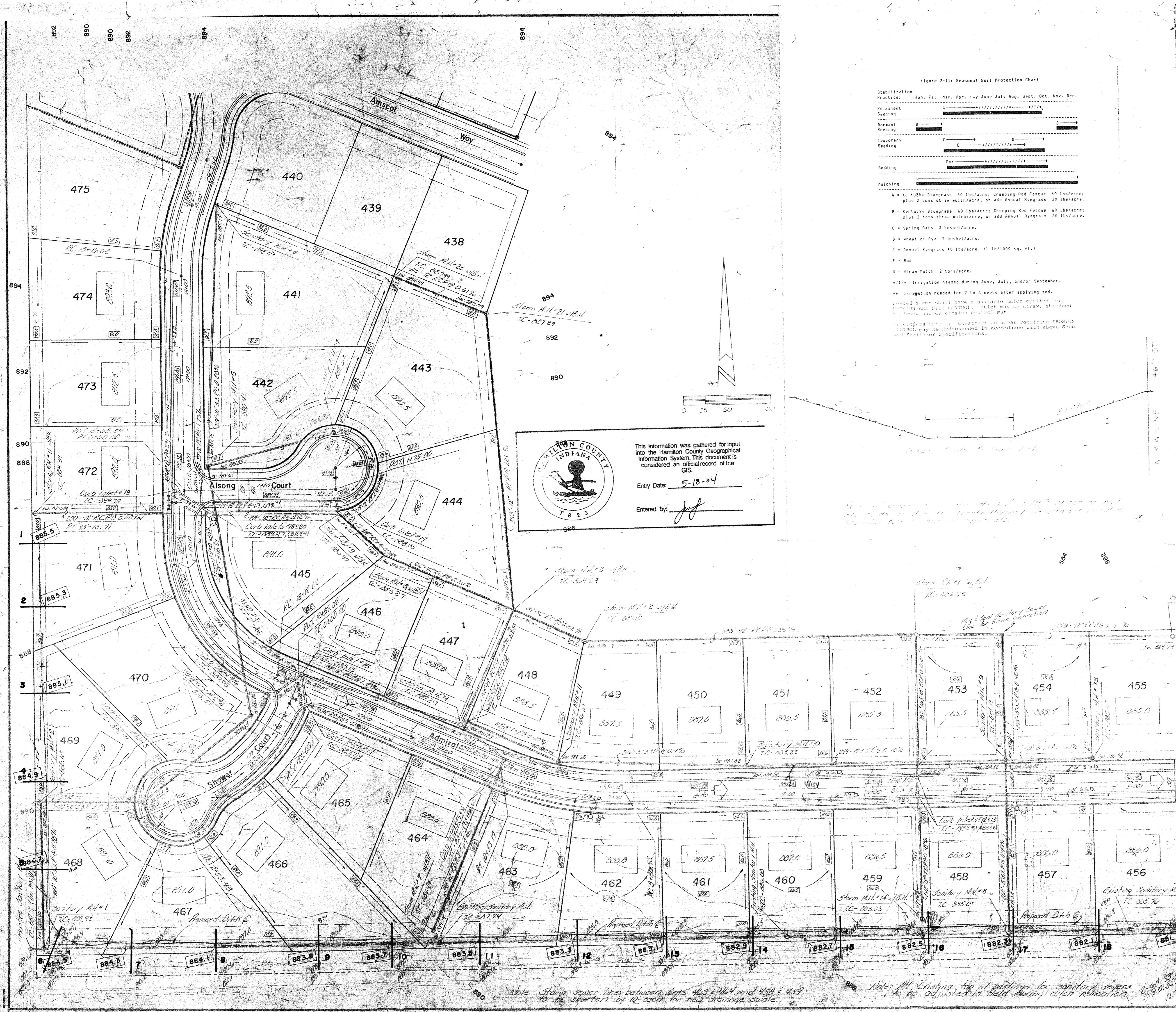


Figure 2-11: Seasonal Soil Protection Chart

| Practice | Jan. | Feb. | Mar. | Apr. | May | June | July | Aug. | Sept. | Oct. | Nov. | Dec. |
|-------------------|---|------|------|------|-----|------|------|------|-------|------|------|------|
| Stabilization | [Bar chart showing stabilization practices from Jan to Dec] | | | | | | | | | | | |
| Permeant | [Bar chart showing permeant practices from Jan to Dec] | | | | | | | | | | | |
| Seeding | [Bar chart showing seeding practices from Jan to Dec] | | | | | | | | | | | |
| Spraying | [Bar chart showing spraying practices from Jan to Dec] | | | | | | | | | | | |
| Temporary Seeding | [Bar chart showing temporary seeding practices from Jan to Dec] | | | | | | | | | | | |
| Sodding | [Bar chart showing sodding practices from Jan to Dec] | | | | | | | | | | | |

Mulching

- A = Kentucky Bluegrass 40 lbs/acre; Creeping Red Fescue 40 lbs/acre; plus 2 tons straw mulch/acre, or 400 Annual Ryegrass 50 lbs/acre.
- B = Kentucky Bluegrass 50 lbs/acre; Creeping Red Fescue 40 lbs/acre; plus 2 tons straw mulch/acre, or 400 Annual Ryegrass 50 lbs/acre.
- C = Spring Oats 3 bushels/acre.
- D = wheat or Rye 2 bushels/acre.
- E = Annual Ryegrass 40 lbs/acre, 11 15/1600 sq. ft.
- F = Sod
- G = Straw Mulch 2 tons/acre.

••• Irrigation needed during June, July, and/or September.

••• Irrigation needed for 2 to 3 weeks after applying sod.

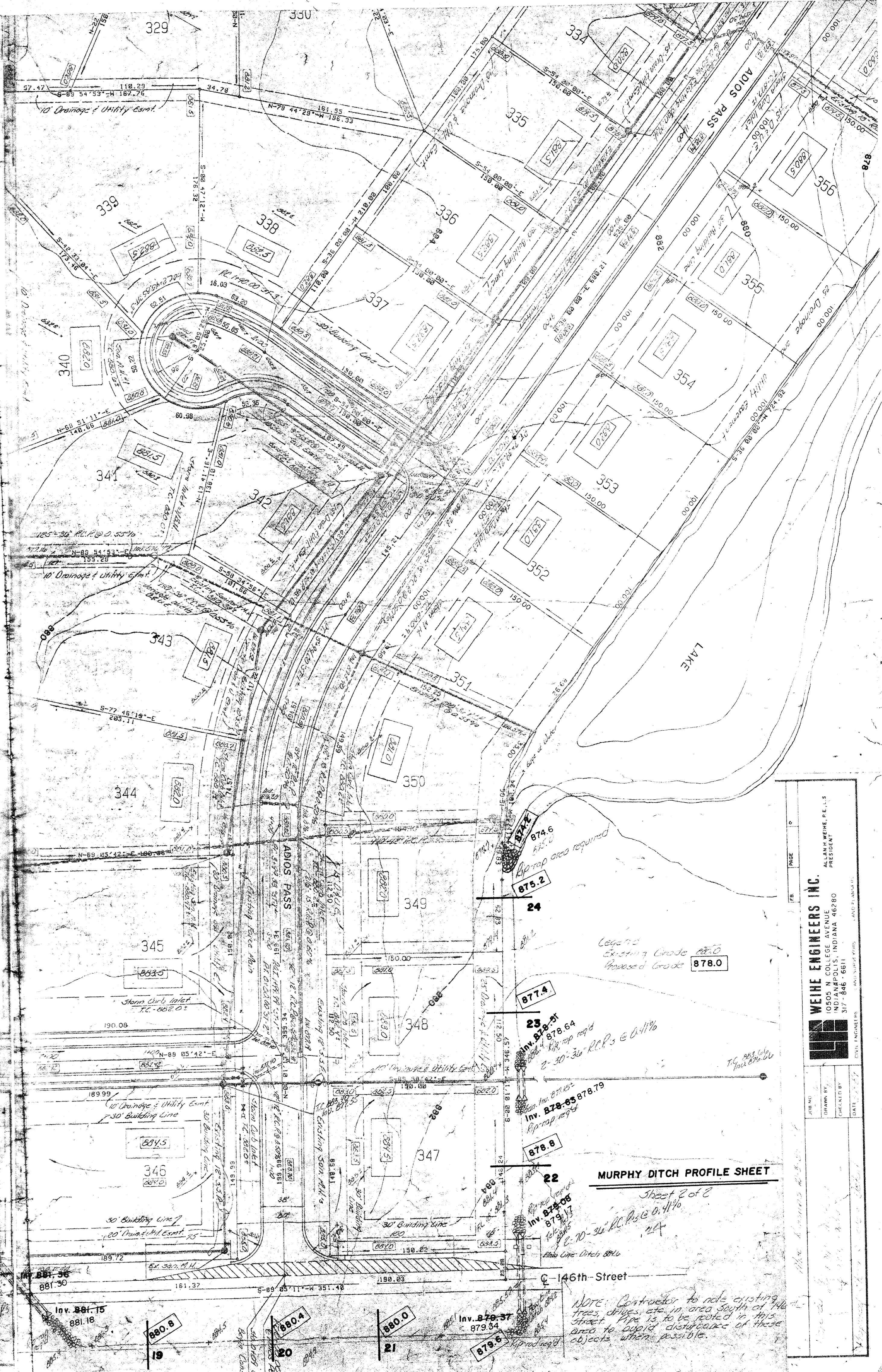
••• Sod must be all from a multiple mulch application for the first 100' of sod. Mulch may be straw, shredded wood, or other erosion control mat.

••• Sod must be conditioned in a nursery or similar facility before installation. Conditioned sod may be hydroseeded in accordance with above Road and Fertilizer Specifications.

This information was gathered for input into the Hamilton County Geographical Information System. This document is considered an official record of the GIS.

Entry Date: 5-18-04

Entered by: [Signature]



MURPHY DITCH PROFILE SHEET

Sheet 2 of 2

Inv. 878.64

Inv. 878.65

Inv. 878.66

Inv. 878.67

Inv. 878.68

Inv. 878.69

Inv. 878.70

Inv. 878.71

Inv. 878.72

Inv. 878.73

Inv. 878.74

Inv. 878.75

Inv. 878.76

Inv. 878.77

Inv. 878.78

Inv. 878.79

Inv. 878.80

Inv. 878.81

Inv. 878.82

Inv. 878.83

Inv. 878.84

Inv. 878.85

Inv. 878.86

Inv. 878.87

Inv. 878.88

Inv. 878.89

Inv. 878.90

Inv. 878.91

Inv. 878.92

Inv. 878.93

Inv. 878.94

Inv. 878.95

Inv. 878.96

Inv. 878.97

Inv. 878.98

Inv. 878.99

Inv. 879.00

WEINE ENGINEERS, INC.

Professional Engineer

INDIANAPOLIS, INDIANA 46280

317-846-6511

www.weine-engineers.com